

# Campaigns for Change

**ALONE's Campaigns for Change** are designed to tell the truth about the challenges some older people face. We work directly with older people in need, meaning that all our campaigns represent the real situations facing the older people we work with.

As well as highlighting issues, our campaigns are also designed to make real changes at an individual, local and political level.



## **ALONE's Campaigning Issues include:**

- Loneliness
- Social Isolation
- Poor Housing
- Disability
- Fuel Poverty
- Elder Abuse
- Mobility Issues
- Discrimination
- Marginalisation
- Home Care
- Deprivation

**ALONE is an independent charity that works with the 1 in 5 older people who are homeless, socially isolated, living in deprivation or in crisis.**

We receive no Government funding for our day-to-day services and rely solely on the generosity of the general public to continue our work.

Our services are delivered 365 days a year and we operate with a ratio of 1 staff member to every 18 volunteers.

**To donate log on to [www.alone.ie](http://www.alone.ie)**

# ALONE

**Helping older people in need**

ALONE, Olympic House,  
Pleasants St., Dublin 8  
Phone: 01 679 1032  
[enquiries@alone.ie](mailto:enquiries@alone.ie)

[/alone\\_ireland](https://twitter.com/alone_ireland) [f](#) Like us on facebook  
[www.alone.ie](http://www.alone.ie)

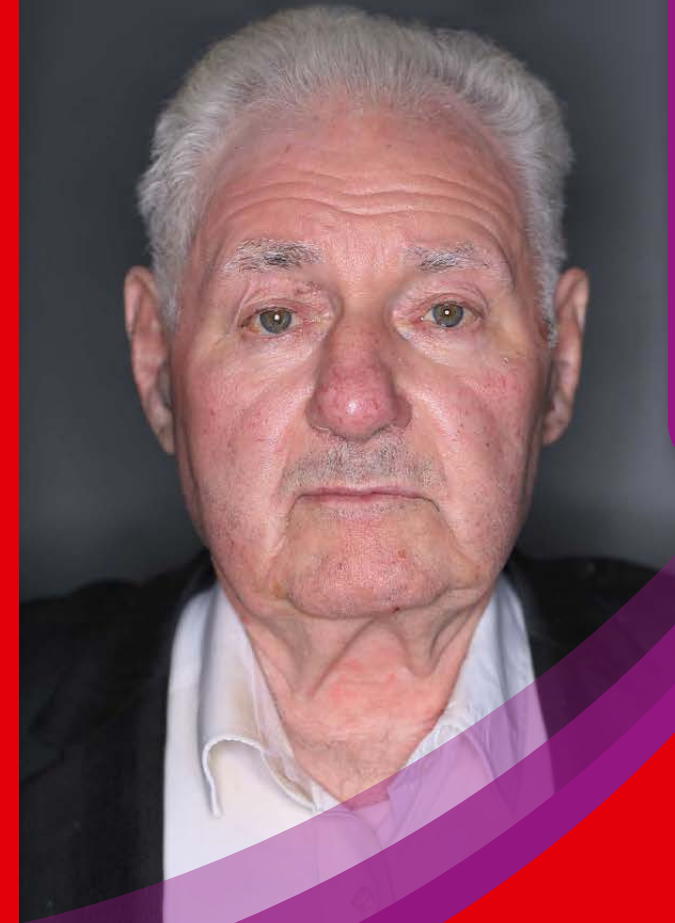


ALONE is an independent charity. Registration Number CHY8259

ALONEDLRev40914

# ALONE

**Helping older people in need**



Information Leaflet

**ALONE supports older people in need through:**

Supportive Housing  
Befriending  
Community Response  
Campaigning

**ALONE is an independent charity that works with the 1 in 5 older people who are homeless, socially isolated, living in deprivation or in crisis.**

We provide Supportive Housing, Befriending, Community Response and Campaigning services to hundreds of older people every week.

All of our services are confidential and non-denominational.

## Supportive Housing

**ALONE Housing** provides homeless older people with the comfort, safety, and support they need to age in the community. Staff and volunteers work with each resident to ensure they receive the practical and personal supports required to live fulfilling, independent lives as they age. Every ALONE home is age friendly, has its own front door, and is warm and comfortable.

*"I feel safe and secure now that I have a place to call home"*

Margaret, 88, ALONE Resident



## Befriending

**ALONE's Befriending Service** provides companionship for isolated older people. Loneliness is a serious health risk and a volunteer visit once a week can make a huge difference.

*"All he asks of me is to come back each week with a smile"*

Barbara, Befriending Volunteer

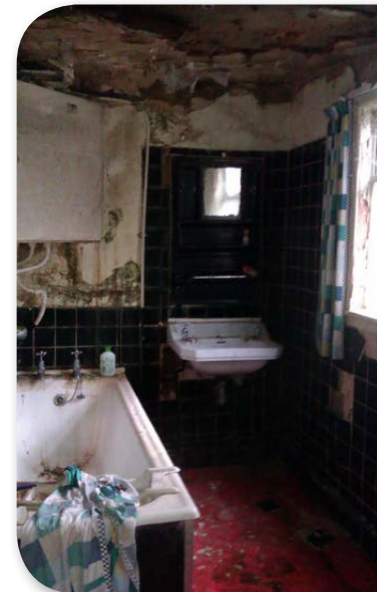


Volunteers can support older people to get out and about, help with day to day tasks, or have a chat over a cup of tea at home. All ALONE volunteers are trained, Garda vetted and supported by experienced mentors.

## Community Response

**ALONE's Community Response** works with older people who are in crisis situations and those who don't know where else to go for help. The main issues we deal with are poor housing, health, elder abuse, poverty and lack of services.

We address the emergency situation and work with other agencies to provide long term sustainable solutions for the older people in need.



*"Thank you for getting my roof fixed, it was the first time that anyone has helped me"*

Anna, 85, Dublin